

PROGRESS TO DATE

MUMBLES COASTAL PROTECTION SCHEME OCTOBER 2024

Wall A

We have now completed the vertical walls at wall type A with the final pour completed this week. We will be proceeding with the handrailing and promenade works along this section in the next few weeks.

Wall B

We are progressing well with the wave return elements to wall B with 46 poured to date from Oystermouth car park to the Oyster house hotel. Upon completion of these works we will be looking to complete the handrailing and promenade works which will follow on from wall type A.

Revetment C

We have substantially completed the works to the foreshore at revetment C. We are continuing the works to the Pilot Slipway, tying into the wall at Verdi's and to the transition section between wall type B and revetment C at Promenade Terrace. The wave returns through this section are also substantially completed with 79 poured to date. We have imported fill to raise the promenade section through revetment C and the infilling works are continuing with surfacing works planned at the end of this month to allow for promenade access.

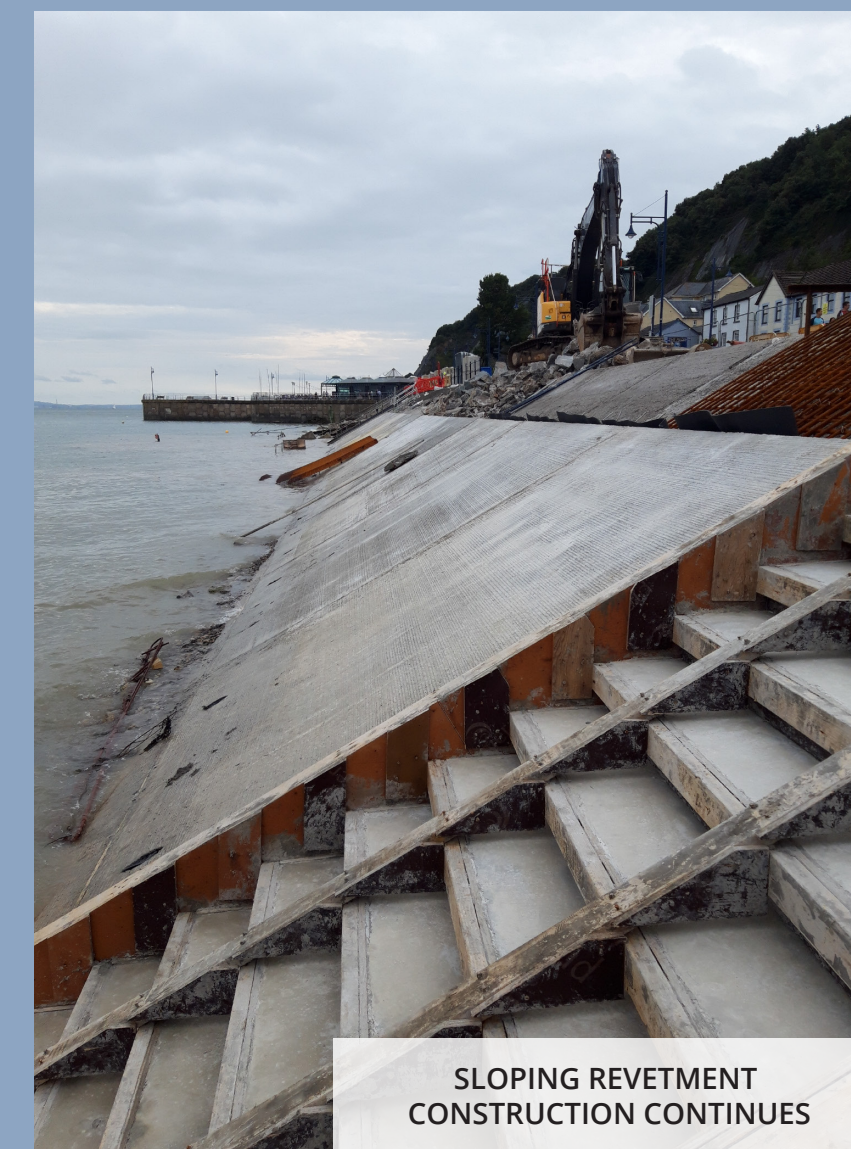
Secondary Wall and Public Realm works

The secondary wall is progressing steadily with works almost completed throughout Oystermouth car park into promenade terrace and also a large section completed at Southend car park. The copings will be placed to complete the wall shortly. We have started works in the car park opposite the George which include street lighting works, kerbing, drainage and re-surfacing.

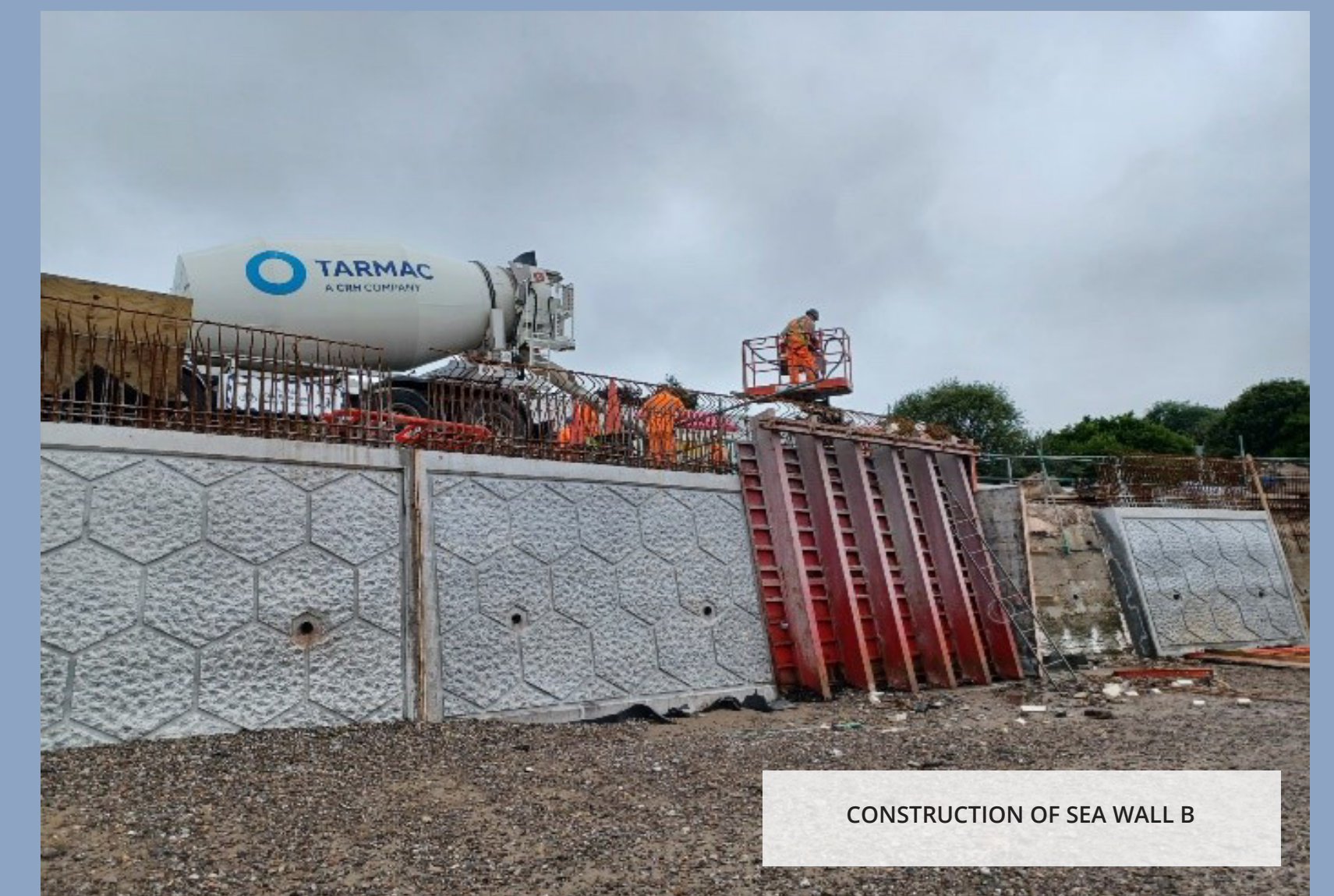
PROGRESS PHOTOS



WAVE RETURN ON WALL B



SLOPING REVETMENT
CONSTRUCTION CONTINUES



CONSTRUCTION OF SEA WALL B



NEW APPRENTICES, GRADUATES
AND INDUSTRY PLACEMENTS JOIN TEAM.



LANDSCAPING OF RAISED PLANTERS AT
OYSTER WHARF WITH TEMPORARY SEATING TO ENABLE THE PUBLIC
TO ENJOY THE RECENT AIRSHOW



SECONDARY WALL AT
OYSTERMOUTH



EXCAVATION WORKS AT
VERDIS



REVETMENT C CONSTRUCTION
PROGRESS

